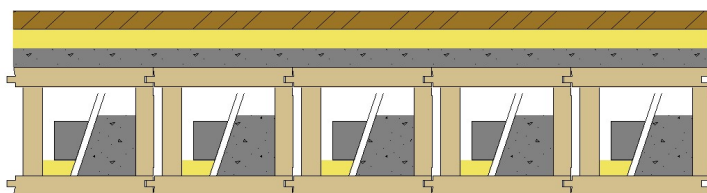


## Schalldämm-Mass

# 4153

mm kg/m<sup>2</sup>



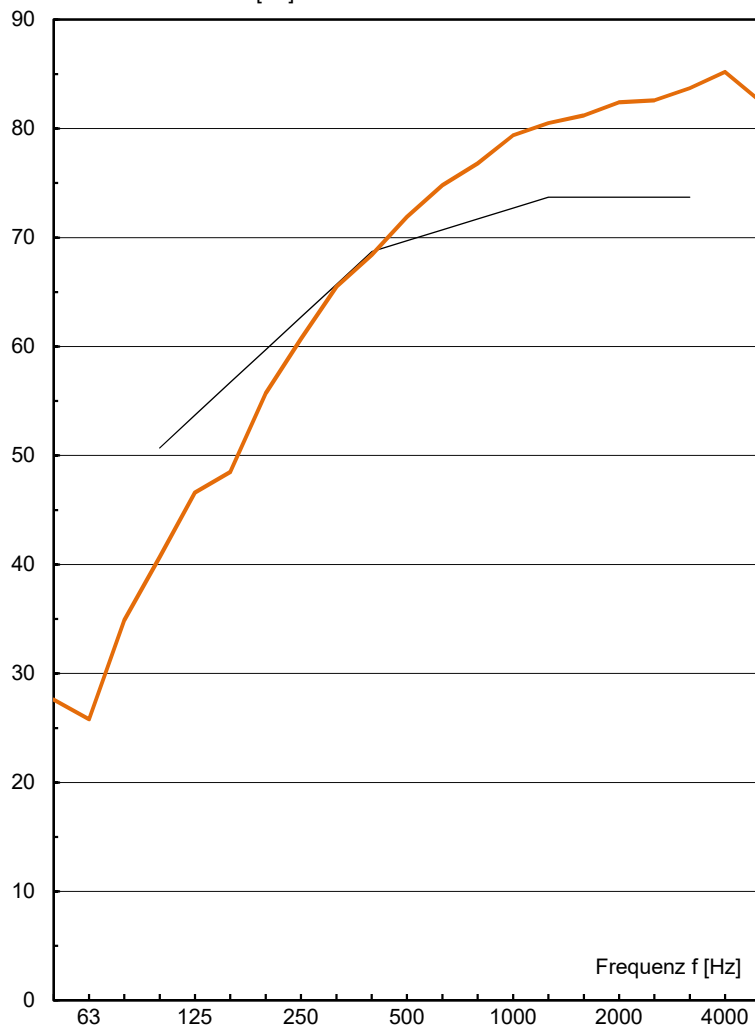
Verlegespanplatte	28	17
Isover Akustic EP 2, s' ≤ 15MN/m <sup>3</sup>	30	4
Fermacell Wabenschüttung	30	45
LIGNATUR Kastenelement	200	47
silence12		25
mit Schüttung 75kg/m <sup>2</sup>		75

288 213

$$R_w (C ; C_{tr}) = 69 (-4 ; -11) \text{ dB}$$

( C = C<sub>100-3150</sub> ; C<sub>tr</sub> = C<sub>tr,100-3150</sub> )

Schalldämm-Mass R [dB]



ift Rosenheim

R <sub>w</sub>	69.7
C <sub>100-3150</sub>	-4
C <sub>50-3150</sub>	-10
C <sub>100-5000</sub>	-3
C <sub>50-5000</sub>	-9
C <sub>tr,100-3150</sub>	-11
C <sub>tr,50-3150</sub>	-23
C <sub>tr,100-5000</sub>	-11
C <sub>tr,50-5000</sub>	-23

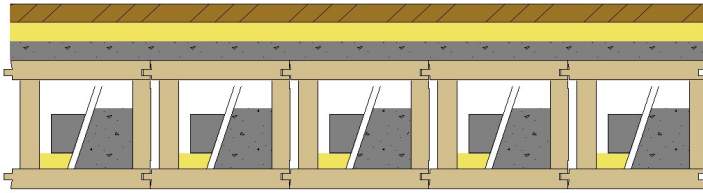
f [Hz]	R [dB]
50	27.6
63	25.8
80	34.9
100	40.7
125	46.6
160	48.5
200	55.7
250	60.7
315	65.5
400	68.4
500	71.9
630	74.8
800	76.8
1000	79.4
1250	80.5
1600	81.2
2000	82.4
2500	82.6
3150	83.7
4000	85.2
5000	82.5

Messung: 4153  
 Datum: 16.01.14  
 Prüffläche: 20.0 m<sup>2</sup>  
 Volumen: 63.0 m<sup>3</sup>  
 Abweichung:

## Norm-Trittschallpegel

# 4153

mm kg/m<sup>2</sup>



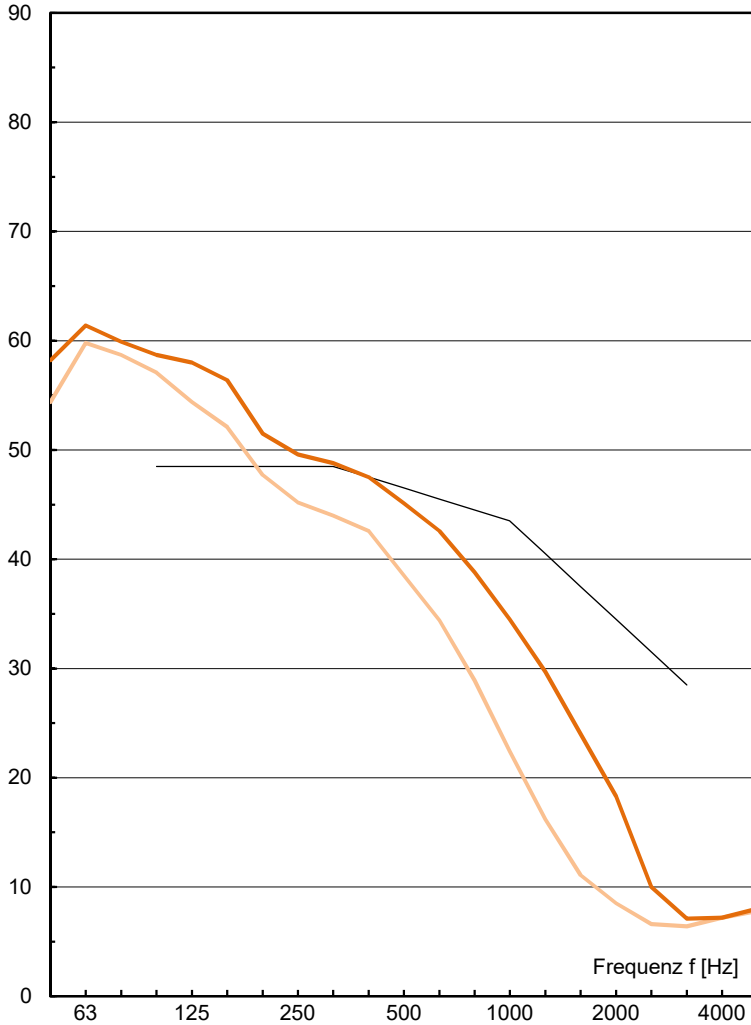
Verlegespanplatte	28	17
Isover Akustic EP 2, s' ≤ 15MN/m <sup>3</sup>	30	4
Fermacell Wabenschüttung	30	45
LIGNATUR Kastenelement	200	47
silence12		25
mit Schüttung 75kg/m <sup>2</sup>		75

288 213

$$L_{n,w} (C_1) = 47 (1) \text{ dB}$$

(C<sub>1</sub> = C<sub>1,100-2500</sub>)

Norm-Trittschallpegel L<sub>n</sub> [dB]



	ift Rosenheim	mit Parkett (orientierend)
L <sub>n,w</sub>	46.5	42.9
C <sub>1,100-2500</sub>	1	2
C <sub>1,50-2500</sub>	5	7
C <sub>1,50-250</sub>	5	7

f [Hz]	L <sub>n</sub> [dB]	L <sub>n</sub> [dB]
50	58.2	54.4
63	61.4	59.8
80	59.9	58.7
100	58.7	57.1
125	58.0	54.4
160	56.4	52.1
200	51.5	47.7
250	49.6	45.2
315	48.8	44.0
400	47.5	42.6
500	45.1	38.5
630	42.6	34.4
800	38.8	28.9
1000	34.5	22.4
1250	29.7	16.2
1600	24.0	11.1
2000	18.3	8.5
2500	10.0	6.6
3150	7.1	6.4
4000	7.2	7.2
5000	8.0	7.8

Messung:	4153	4153
Datum:	16.01.14	16.01.14
Bezugsfläche:	10.0 m <sup>2</sup>	10.0 m <sup>2</sup>
Volumen:	63.0 m <sup>3</sup>	63.0 m <sup>3</sup>
Abweichung:		